



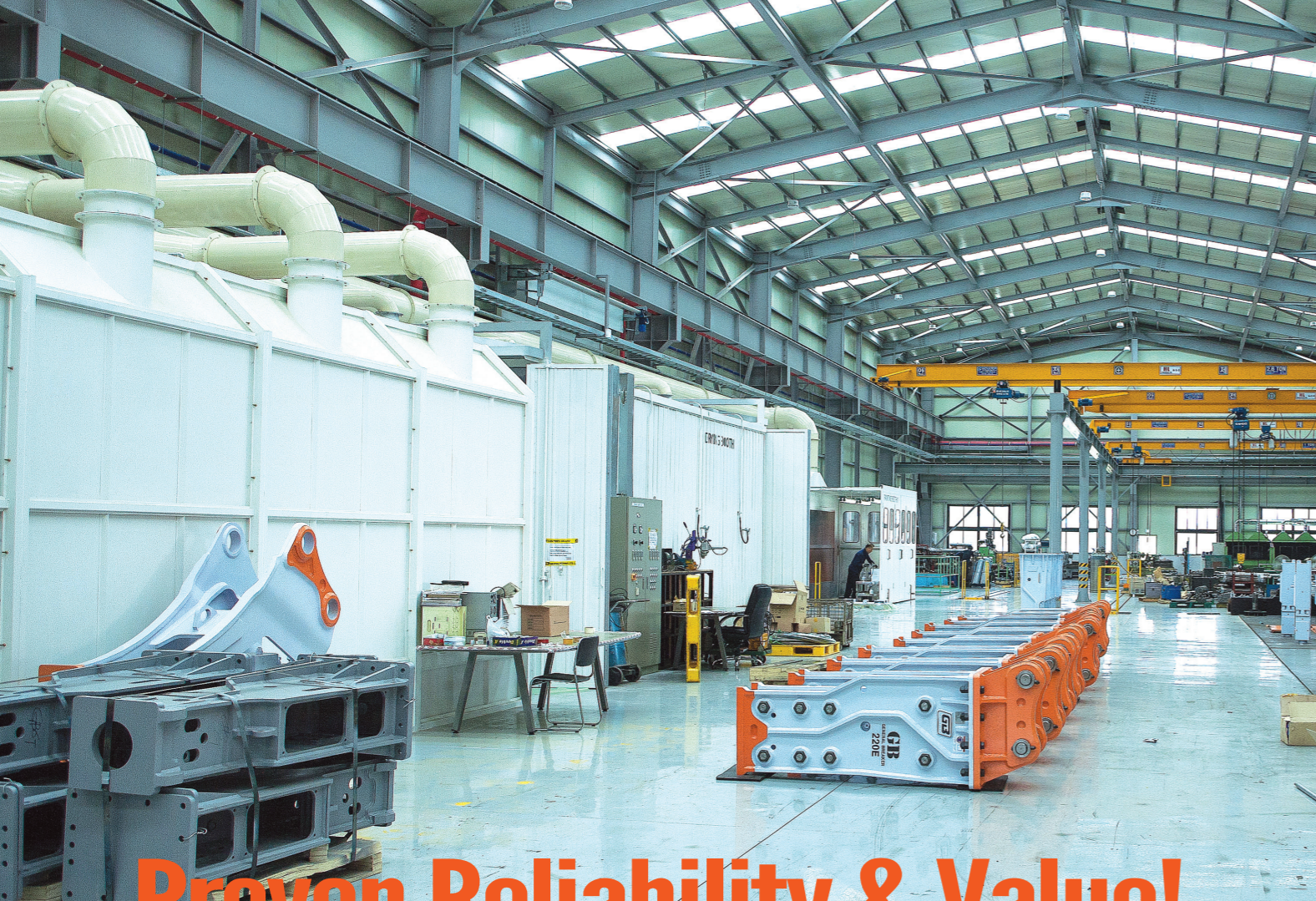
GB **GB INDUSTRIES CO., LTD.**
General Breaker

EUROPE BRANCH

Bovendijk 218, 3045PD Rotterdam, The Netherlands
Phone : +31(0)10-4189824 Fax : +31(0)10-4224380
E-mail : jang@gbhammer.nl

HYDRAULIC BREAKER
GB Makes Good Breaker • Good Business with GB

Distributor



Proven Reliability & Value!



GENERAL BREAKER constantly strives to maximize the satisfaction of our customers throughout the world by offering high-quality products at competitive prices along with prompt and professional after-sales service. In addition, we are exerting our utmost efforts to develop and apply innovative technology to the manufacture of GB Hydraulic Hammers and Insertion Tools.



General Breaker

Specialized in manufacturing, supplying Hydraulic Breakers and Insertion Tools whose features are:

- Superior Power / Efficiency
- Extended Durability
- Reliable Availability
- Simple & Easy Maintenance
- High Productivity
- Quick Customer Service

GB Bracket Type



Side Bracket Type (Triangle Type)

GBN10TS/GBN20TS/GBN30TS/GBN45TS/GBN60TS/GBN70TS/
GBN100TS/GBN140TS/GBN170TS/GBN210TS/GBN220TS/
GBN400TS/GBN800TS/GBN300ES/GBN400ES/GBN450ES/
GBN600ES

Side Plate Type (Top Type)

GBN10T/GBN20T/GBN30T/GBN45T/GBN60T/GBN70T/GBN100T/
GBN140T/GBN170T/GBN210T/GBN220T/GBN400T/GBN800T/
GBN300E/GBN400E/GBN450E/GBN600E

Uni Ram Type

GBN10TU/GBN20TU/GBN30TU/GBN45TU/GBN60TU/GBN70TU/
GBN100TU/GBN140TU

Box Type (Low Noise Type)

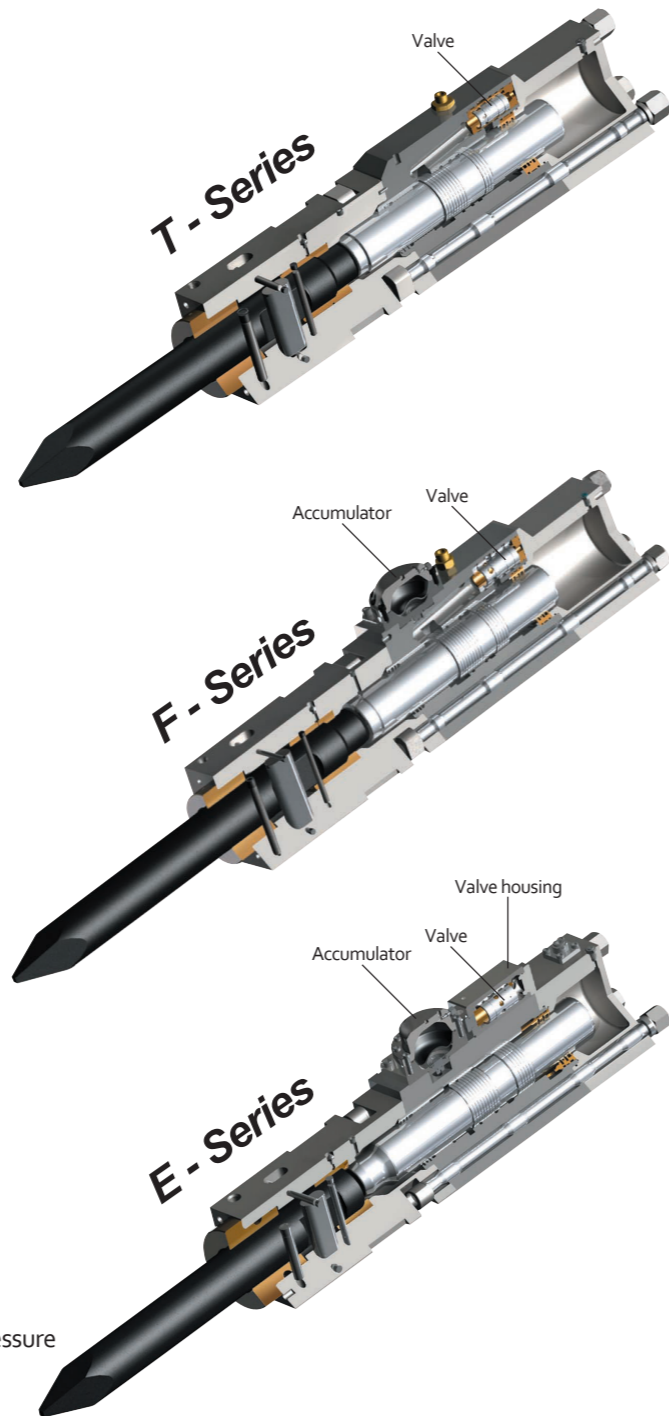
GBN10TL/GBN20TL/GBN30TL/GBN45TL/GBN60TL/GBN70TL/
GBN100TL/GBN140TL/GBN170TL/GBN210TL/GBN220TL/GBN400TL/
GBN800TL/GBN300EL/GBN400EL/GBN450EL/GBN600EL

For Back Hoe Loader

GBN60TB/GBN70TB



Guaranteed Satisfaction!



Functions

Extended piston stroke

- Smoother operation
- Minimal repercussion on carrier

Improved properties(Piston)

- Improved emergency running properties
- Manufactured with high-quality nickel & vanadium alloy steel

GB Tool

- Exceptional performance and reliability
- Manufactured with high-quality alloy steel

Back Head

- Power accumulator

Lubrication adequate for entire shift

- Reduced wear and tear
- Consistent availability due to extended maintenance intervals

Cylinder & Valve

- Prevents scoring with precision finishing treatment

Tie rod

- Dynamic screw design prevents damage

Accumulator(Some models applied)

- Reduced irregular pulse pressure on hydraulic circuit
- Improved striking power with supply of accumulated gas pressure

Quality Materials + Quality Control = Quality Guaranteed Products

GB uses only the highest quality materials which are machined by our experienced technicians utilizing state-of-the-art manufacturing technology and production machinery.

GB's stringent quality control procedures ensure superior quality hydraulic hammers.

- Precision machining
- Strict monitoring of temperatures and time intervals for multi-phase heat treatment processes
- Precision welding of hammer holders, hammer brackets and adapters
- Stringent, continuous quality control checks and comprehensive final testing of all GB hydraulic hammers prior to delivery



GB TOOL

GB insertion tools match the hammer exactly with regards to

- Dimensions
- Grade of Special steel(manufactured with high-quality alloy steel)
- Multistage heat treatment and tempering

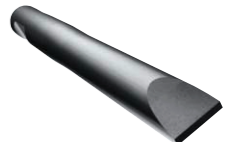
Moil point

- Fine/medium concrete demolition, non-stratified rock
- Secondary mining of soft/medium blocks



Wedge

- Types of digging or narrow trenching of soft/medium stratified rock



Blunt

- Breaking blocks(up to medium hardness) or cutting blocks to size



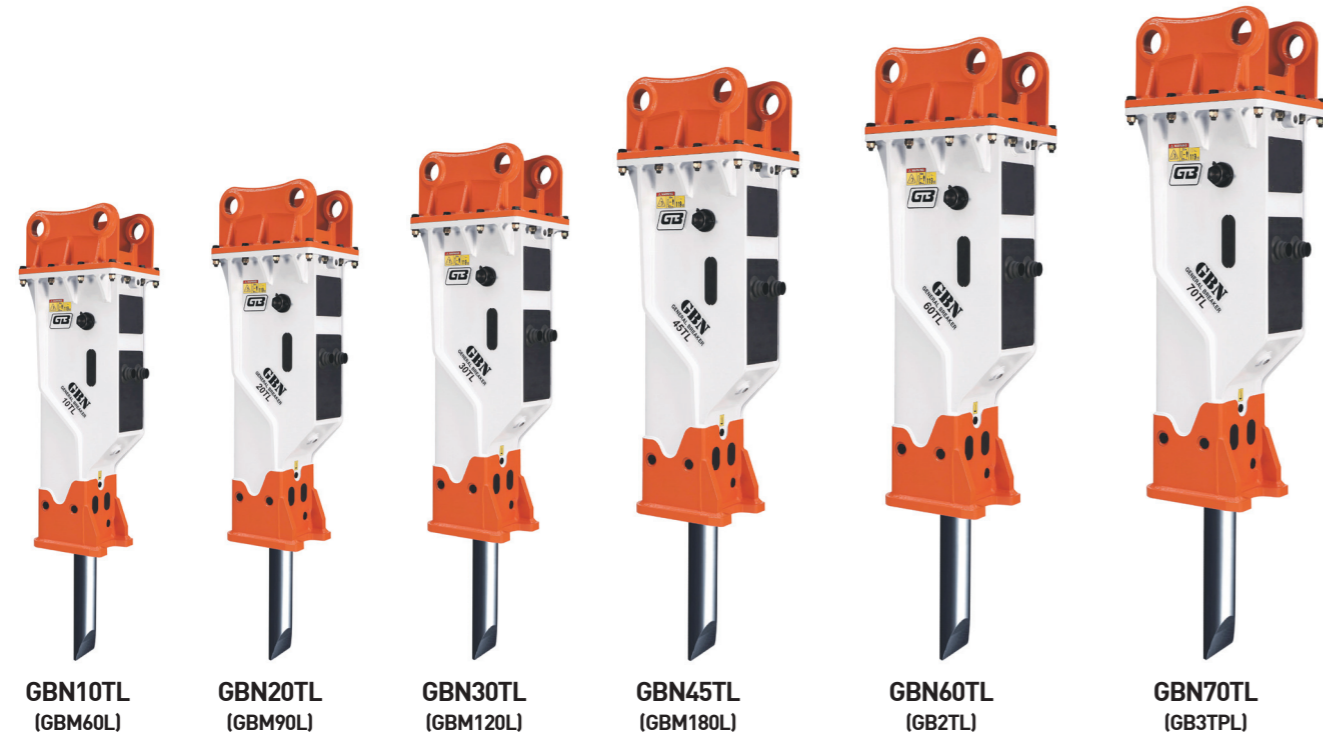
Cone

- Universal tool

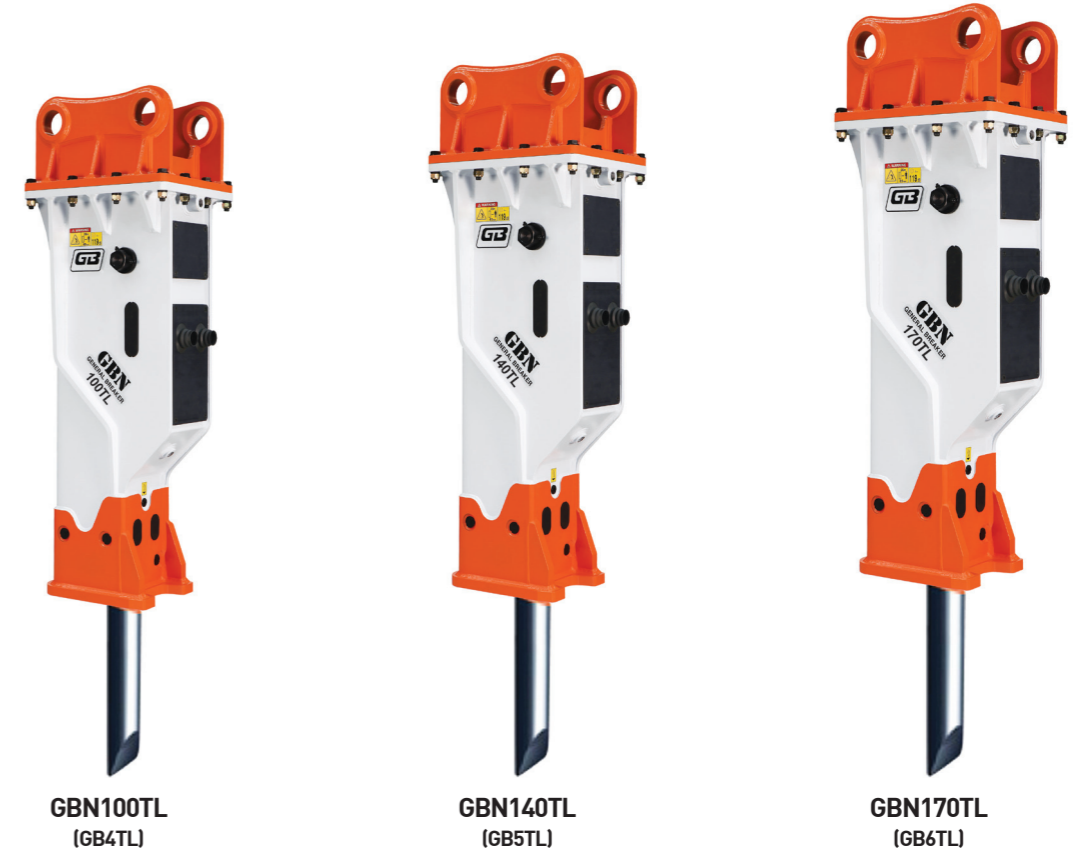


T-series

GB Models satisfy what operators want to achieve.



Here is the most advanced technology in Hydraulic Breakers



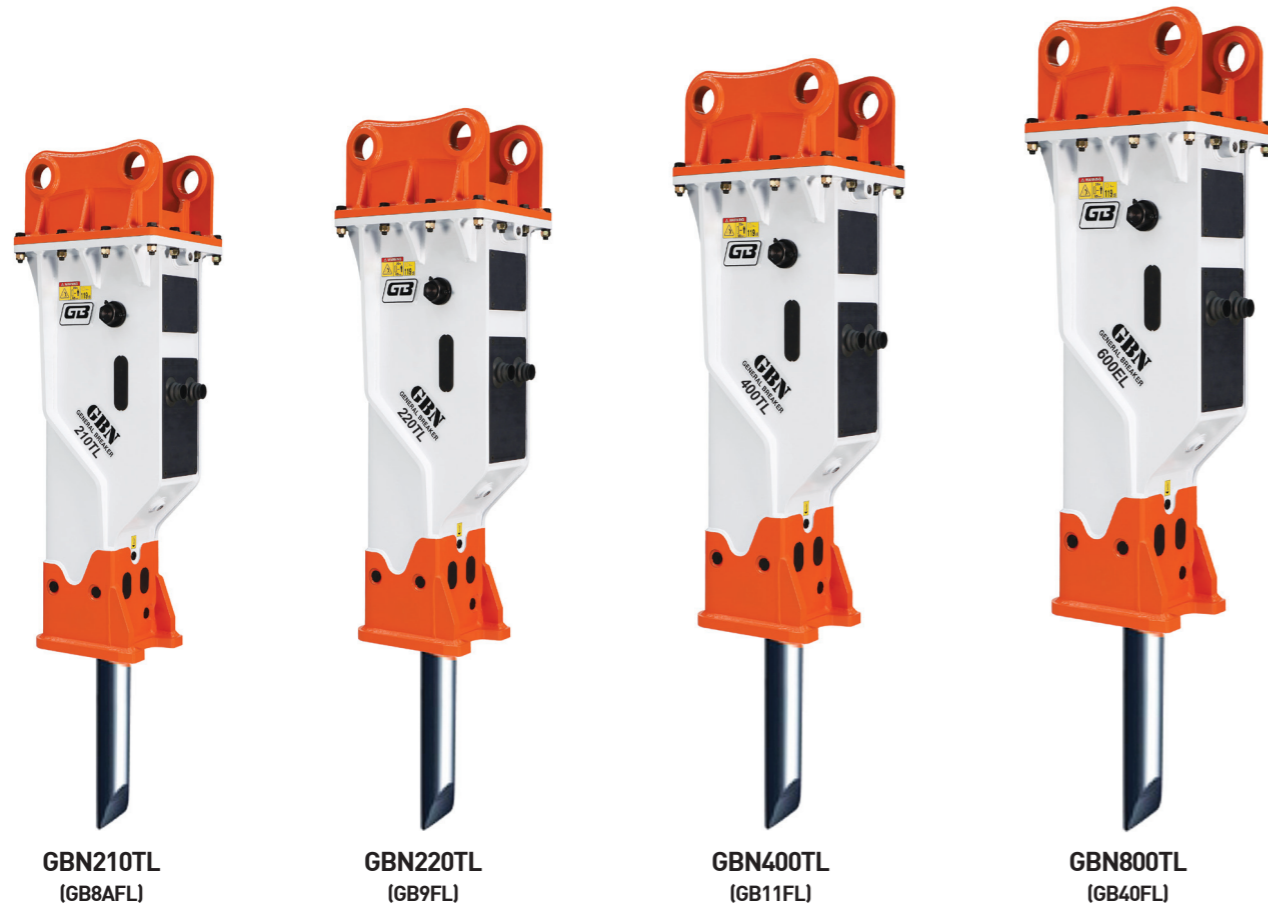
SPECIFICATIONS (T-Series)

Description		Model	BASE MODEL	GBM60	GBM90	GBM120	GBM180	GB2T	GB3TP
		GBN SERIES	GBN10T	GBN20T	GBN30T	GBN45T	GBN60T	GBN70T	
Operating Weight (Tool + M / C)	Silenced	Kg	135	145	180	250	310	380	
		lb	298	320	397	551	683	838	
	Open Top	Kg	75	86	160	225	324	380	
		lb	165	190	353	496	714	838	
Main Body Weight		Kg	50	60	86	112	156	192	
Tool (Moil Type)	Weight	Kg	4	6.0	9	12	20	25	
	Diameter	mm	40	45	53	60	70	75	
Operating Pressure (Breaker)		bar	80 ~ 100	80 ~ 100	90 ~ 120	100 ~ 130	95 ~ 130	100 ~ 140	
		psi	1,160 ~ 1,450	1,160 ~ 1,450	1,305 ~ 1,740	1,450 ~ 1,885	1,377 ~ 1,885	1,450 ~ 2,030	
Setting Pressure (Machine)		bar	150	150	150	160	170	180	
		psi	2,175	2,175	2,175	2,320	2,465	2,610	
Impact Rate		bpm	800 ~ 1,400	700 ~ 1,200	600 ~ 1,100	500 ~ 1,000	450 ~ 1,000	475 ~ 950	
Accumulator Pressure (N2-Gas)		bar / psi	NONE ACCUMULATOR						
Back Head Pressure (N2-Gas)		bar / psi	14 / 203	14 / 203	16 / 232	16 / 232	16 / 232	16 / 232	
Required Oil Flow		l/min	15 ~ 30	20 ~ 35	25 ~ 50	30 ~ 60	34 ~ 60	40 ~ 80	
		g/min	3.9 ~ 7.9	5.3 ~ 9.2	6.6 ~ 13.2	7.9 ~ 15.8	8.9 ~ 15.8	10.5 ~ 21.1	
Suitable Excavator	Min	ton	0.8	1.2	2.5	3	3.5	6	
	Max	ton	2.5	3	4.5	5.5	7	9	
	Suitable	ton	1	2	3	5	6	7	
Impact Energy		J	157	168	318	493	579	622	
		ft/lb	116	124	235	364	427	459	

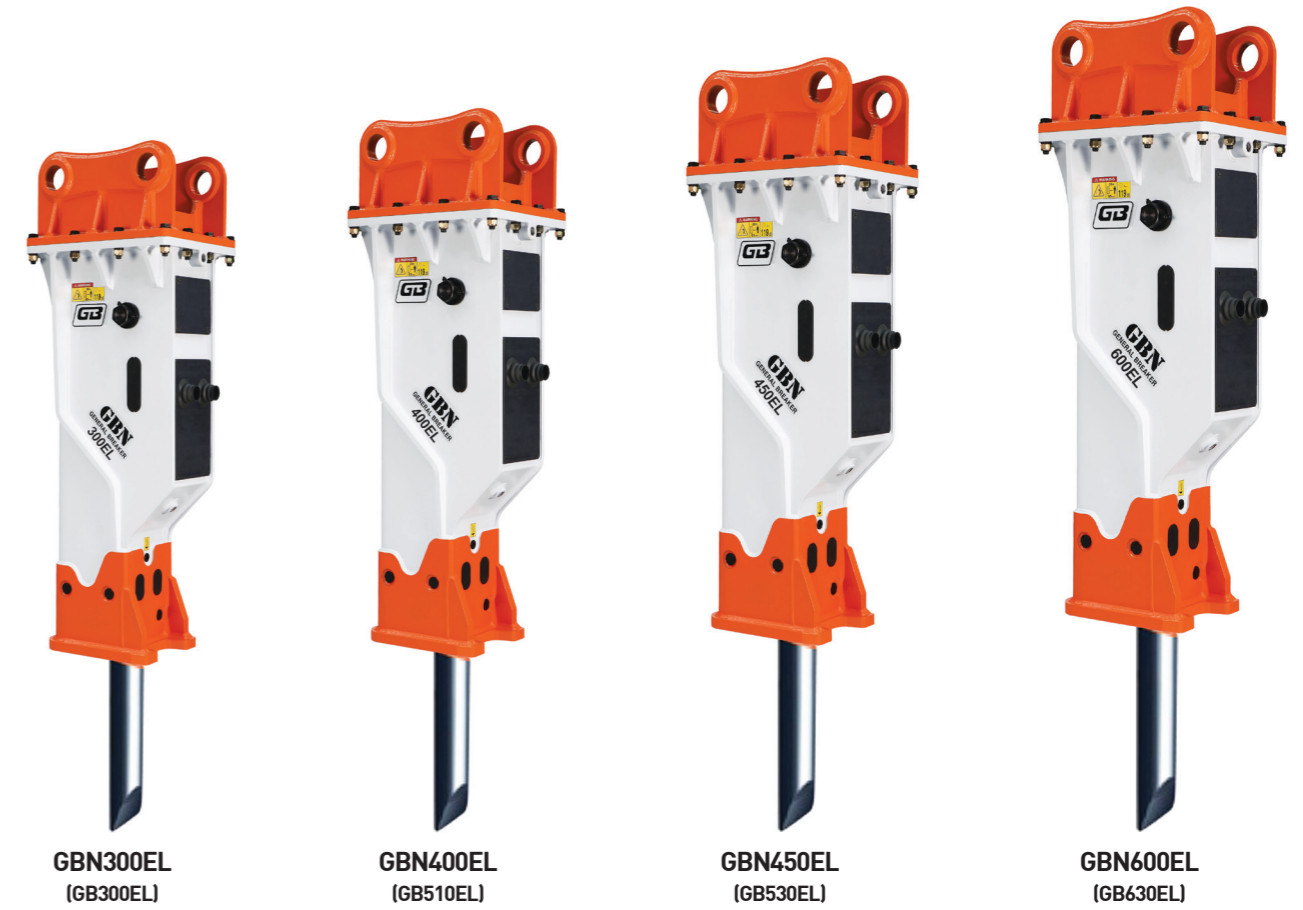
SPECIFICATIONS (T-Series)

Description		Model	BASE MODEL	GB4T	GB5T	GB6T
		GBN SERIES	GBN100T	GBN140T	GBN170T	
Operating Weight (Tool + M / C)	Silenced	Kg	570	890	1,200	
		lb	1,257	1,962	2,646	
	Open Top	Kg	613	850	1,280	
		lb	1,351	1,874	2,822	
Main Body Weight		Kg	266	434	520	
Tool (Moil Type)	Weight	Kg	41	59	97	
	Diameter	mm	90	100	125	
Operating Pressure (Breaker)		bar	130 ~ 160	150 ~ 170	150 ~ 170	
		psi	1,885 ~ 2,320	2,175 ~ 2,465	2,175 ~ 2,465	
Setting Pressure (Machine)		bar	190	200	200	
		psi	2,755	2,900	2,900	
Impact Rate		bpm	480 ~ 850	450 ~ 780	420 ~ 730	
Accumulator Pressure (N2-Gas)		bar / psi	NONE ACCUMULATOR			
Back Head Pressure (N2-Gas)		bar / psi	16 / 232	16 / 232	16 / 232	
Required Oil Flow		l/min	45 ~ 85	85 ~ 110	100 ~ 120	
		g/min	11.8 ~ 22.4	22.4 ~ 29	26.4 ~ 31.6	
Suitable Excavator	Min	ton	6	10	15	
	Max	ton	13	17	20	
	Suitable	ton	10	14	17	
Impact Energy		J	1,143	1,785	2,524	
		ft/lb	843	1,317	1,862	

F-series



E-series



SPECIFICATIONS (F-Series)

Description	Model	BASE MODEL	GB8AF	GB9F	GB11F	GB40F
	GBN SERIES	GBN210T	GBN220T	GBN400T	GBN800T	
Operating Weight (Tool + M / C)	Silenced	Kg	1,700	1,930	2,400	6,600
		lb	3,748	4,255	5,291	14,551
Open Top	Kg	1,800	2,020	2,640	6,820	
	lb	3,968	4,453	5,820	15,036	
Main Body Weight	Kg	682	812	1,114	2,900	
Tool (Moil Type)	Weight	Kg	125	129	193	420
	Diameter	mm	135	140	155	210
Operating Pressure (Breaker)	bar	160 ~ 180	160 ~ 180	160 ~ 180	160 ~ 180	
	psi	2,320 ~ 2,610	2,320 ~ 2,610	2,320 ~ 2,610	2,320 ~ 2,610	
Setting Pressure (Machine)	bar	210	210	220	220	
	psi	3,045	3,045	3,190	3,190	
Impact Rate	bpm	350 ~ 680	280 ~ 550	280 ~ 550	195 ~ 260	
Accumulator Pressure (N2-Gas)	bar / psi	60 / 870				
Back Head Pressure (N2-Gas)	bar / psi	16 / 232	16 / 232	16 / 232	16 / 232	
Required Oil Flow	l/min	120 ~ 150	120 ~ 150	160 ~ 240	300 ~ 400	
	g/min	31.6 ~ 39.6	31.6 ~ 39.6	42.2 ~ 63.3	79.2 ~ 105.6	
Suitable Excavator	Min	ton	18	20	28	55
	Max	ton	28	30	40	100
	Suitable	ton	20	24	34	80
Impact Energy	J	4,053	3,991	6,133	20,959	
	ft/lb	2,989	2,944	4,523	15,459	

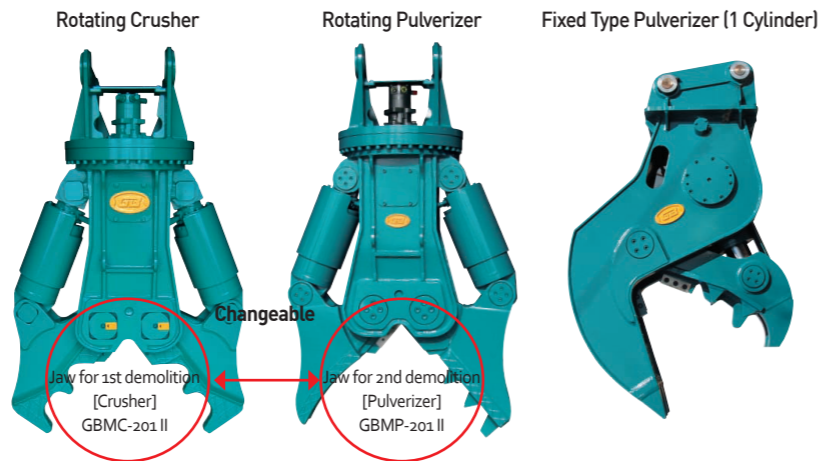
SPECIFICATIONS (E-Series)

Description	Model	BASE MODEL	GB300E	GB510E	GB530E III	GB630E
	GBN SERIES	GBN300E	GBN400E	GBN450E	GBN600E	
Operating Weight (Tool + M / C)	Silenced	Kg	2,200	2,800	3,360	4,900
		lb	4,850	6,173	7,408	10,803
Open Top	Kg	2,390	2,950	3,240	4,890	
	lb	5,269	6,504	7,143	10,781	
Main Body Weight	Kg	889	1,228	1,270	1,910	
Tool (Moil Type)	Weight	Kg	162	213	226	288
	Diameter	mm	150	160	165	180
Operating Pressure (Breaker)	bar	160 ~ 180	160 ~ 180	160 ~ 180	160 ~ 180	
	psi	2,320 ~ 2,610	2,320 ~ 2,610	2,320 ~ 2,610	2,320 ~ 2,610	
Setting Pressure (Machine)	bar	220	220	220	220	
	psi	3,190	3,190	3,190	3,190	
Impact Rate	bpm	300 ~ 650	260 ~ 450	120 ~ 340	100 ~ 250	
Accumulator Pressure (N2-Gas)	bar / psi	60 / 870				
Back Head Pressure (N2-Gas)	bar / psi	6 / 87	6 / 87	16 / 232	12 / 174	
Required Oil Flow	l/min	150 ~ 190	180 ~ 250	190 ~ 280	250 ~ 340	
	g/min	39.6 ~ 50.1	47.5 ~ 66	50.1 ~ 73.9	66 ~ 89.7	
Suitable Excavator	Min	ton	24	33	37	44
	Max	ton	36	50	55	70
	Suitable	ton	30	40	45	55
Impact Energy	J	4,176	5,777	9,823	12,933	
	ft/lb	3,080	4,261	7,245	9,539	

Crusher & Pulverizer

Features (Rotating Crushers & Pulverizer)

- For powerful crushing performance
- Twin-cylinder rotating processor with interchangeable jaws
- Extended Durability with special steel
- Available in cutting steel reinforcing
- Innovation of opening and shutting speed
- 360° Rotation by hydraulic motor



SPECIFICATIONS

Description	Unit	Rotating Crusher & Pulverizer (Changeable Jaw)		Fixed Type Pulverizer
		GBMC-201 II (GBMP-201 II)	GBMC-301 II (GBMP-301 II)	GBP-300
Operating Weight	kg	1,650	2,630	2,334
Operating Pressure	kgf/cm ²	300	320	320
Max. Opening Width	mm	900	1,100	900
Crushing Force	ton	77	138	147
Cutting Force	ton	225	335	270
Rotation	degree	360°	360°	Fixed
Cutter Length	mm	200	200	200
Overall Length	mm	2,220	2,700	2,300
Suitable Excavator	ton	18-26	26-32	26-32

Shear

Features

- Powerful cutting force
- Longer durability with strong power
- Easy cutter change
- Increased working efficiency with high speed
- 360° Rotation by hydraulic motor



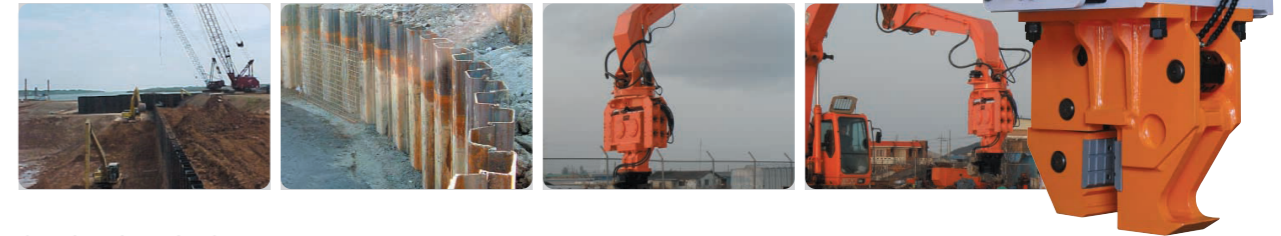
SPECIFICATIONS

Description	Unit	GBMS-301	GBMS-301 II	
Operating Weight	kg	2,450	2,800	
Overall Length	mm	2,400	2,650	
Overall Width	mm	1,140	1,650	
Overall Height	mm	810	830	
Max. Opening Width	mm	570	602	
Cutter Length	mm	600	585	
Cutting Force	ton	270	330	
Operating Pressure	kgf/cm ²	320	320	
Operating Oil Pressure	LPM	250-300	250-300	
Suitable Excavator	ton	26-32	27-36	
Hydraulic Motor Rotating	Motor Setting Pressure	kgf/cm ² (psi)	160 (2,270)	160 (2,270)
	Motor	LPM	15-60	15-60
	Rotation	GPM	5.68-15.7	5.68-15.7
	Rotation Speed	RPM	10-18	10-18

Vibro Hammer

Features

- Can be directly connected with excavator (no need crane)
- Superior working efficiency and wide range of works
- Highly effective BPM with low noise
- Available in hydraulic breaker piping
- 360° Rotation by hydraulic motor



SPECIFICATIONS

Description	Unit	GVH3000	
Working Weight	Pile Driver	kg	1,800
	Extension Boom	kg	1,200-1,300(4M)
Overall Height	mm	2,100	
Operating Pressure	Pile Driver	bar	230
	Chuck	bar	180
	Tilt Cylinder	bar	200
Required Oil Flow	Pile Driver	ℓ/min	220
	Chuck	ℓ/min	30
Max. Vibration Force	tons	30	
Frequency	rpm	2,700	

Description	Unit	GVH3000
Max. Width of Chuck Opening	mm	40
Swing/ Tilt Angle	Degree (°)	360/80
Suitable Base Machine	tons	28-40

Quick Coupler

Features

- The strongest durability on the same class
- Triple safety device
- Reduce the working hours with fast removable coupler
- Enough space for the safety pin



SPECIFICATIONS

Description	Unit	GBTL40	GBTL50	GBTL60	GBTL70	GBTL80	GBTL90	GBTL100	GBTL120	GBTL130
Weight	kg	62-77	72-98	180-235	267-324	330-365	480-559	650-737	765-897	1,001-1,203
Length(L)	mm	560-610	575-690	810-850	920-990	930-1,020	1,000-1,090	1,100-1,200	1,120-1,280	1,270-1,495
Height(H)	mm	285-297	290-307	385-395	470-485	480-490	540-550	640-650	645-655	700-715
Width(W)	mm	262-285	262-310	432-465	500-540	505-550	580-630	604-710	660-760	771-919
Pin Distance	mm	245-285	245-365	375-420	435-480	435-500	485-528	535-587	565-620	640-870
Mounting Distance	mm	245-310	245-390	374-450	430-500	430-535	480-563	525-622	560-685	630-900
Pin Diameter	mm	45	45-60	60-65	70-80	75-90	80-90	100-110	100-120	130-160
Suitable Excavator	ton	4.5-6.0	6.0-8.0	8.0-15.0	15.0-18.0	18.0-25.0	25.0-36.0	30.0-45.0	45.0-55.0	over 70